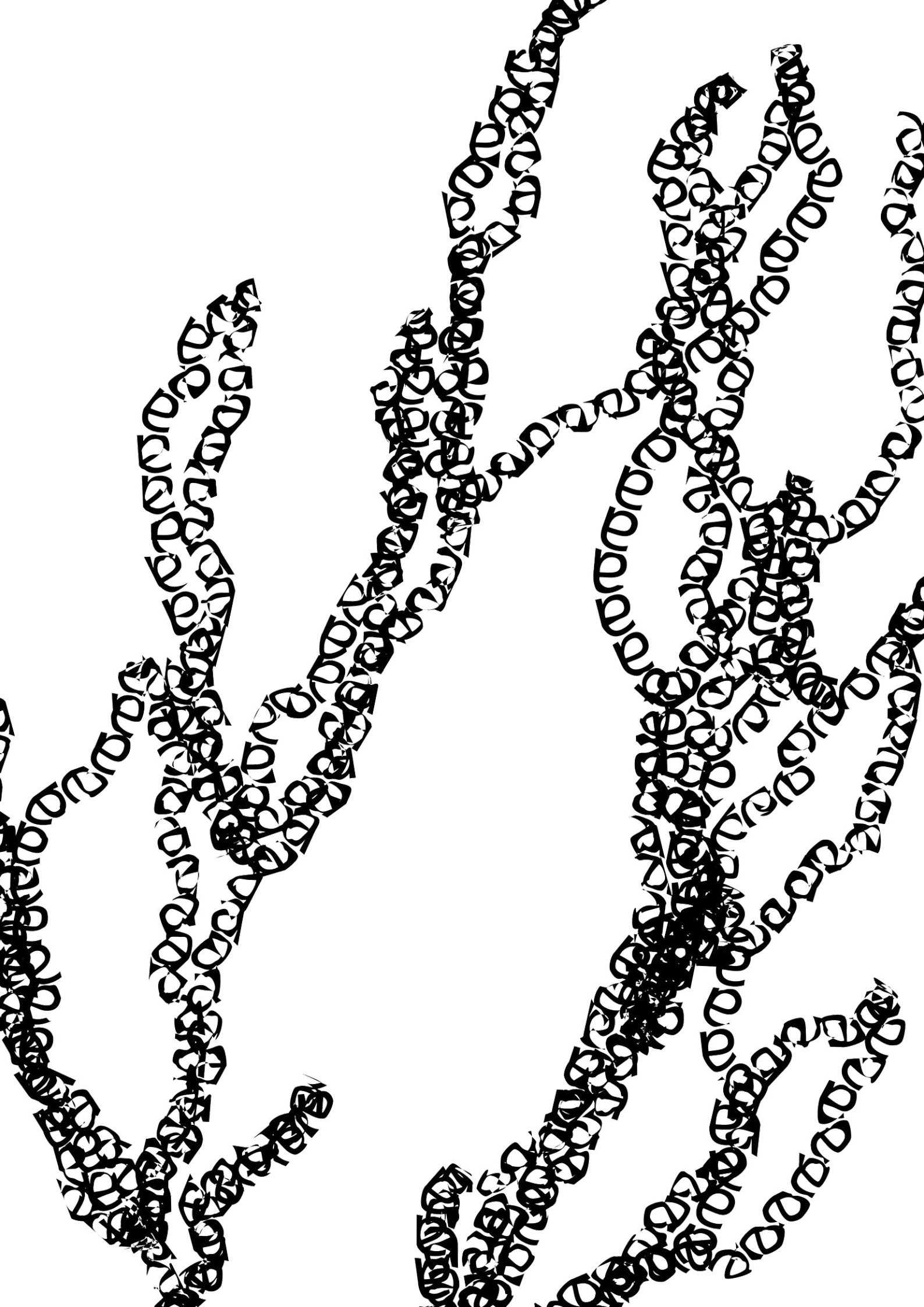
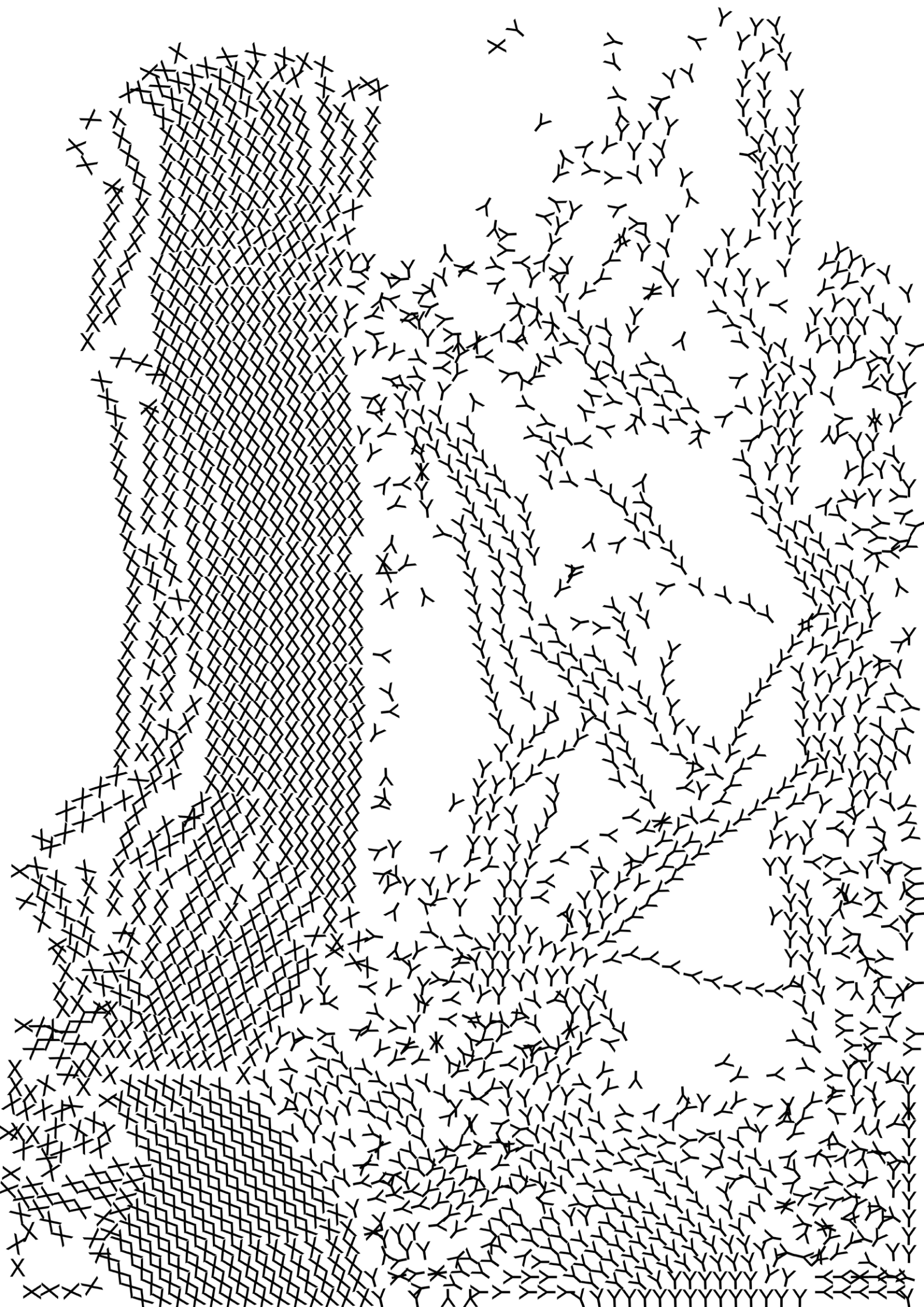


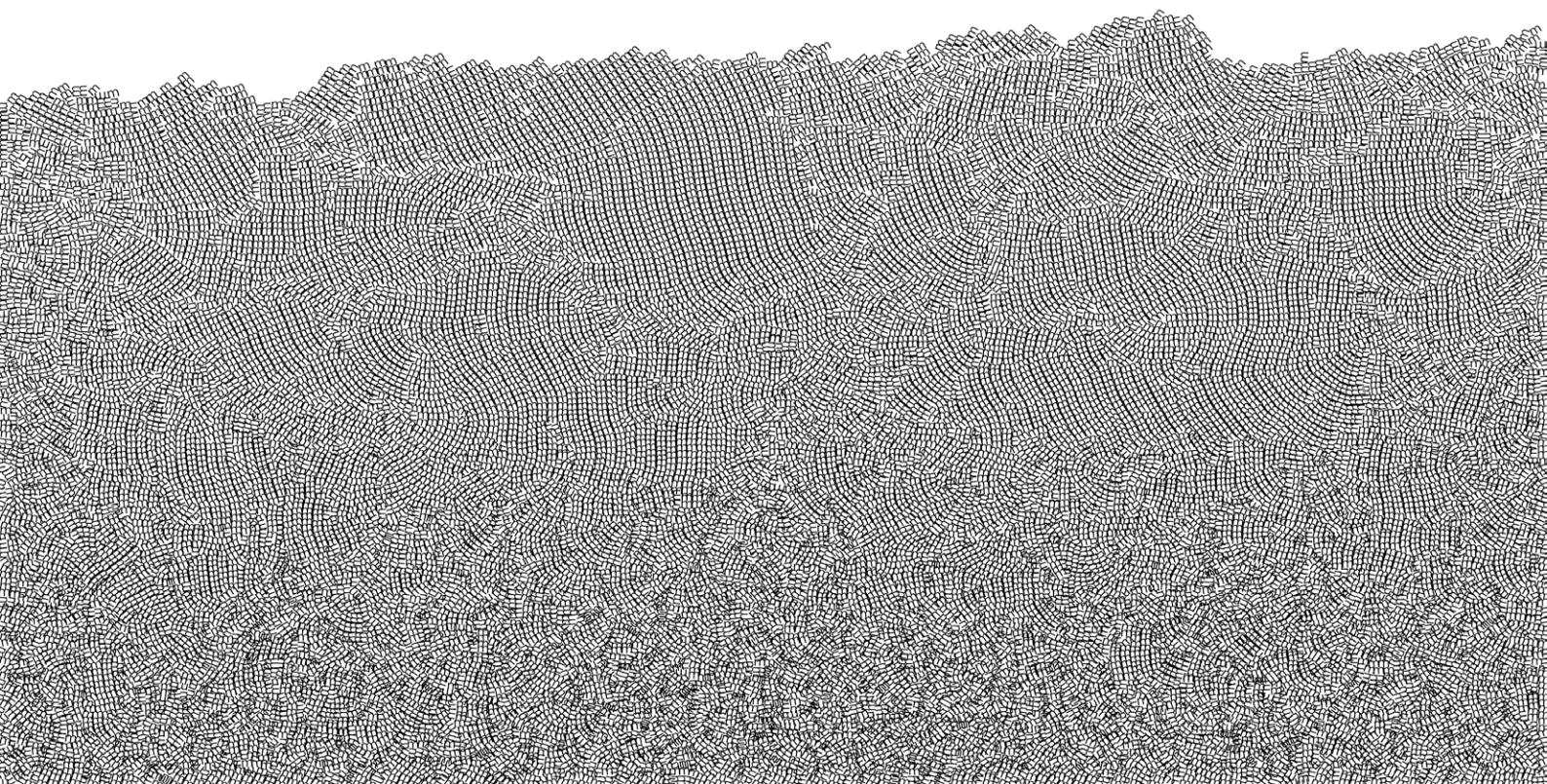
GRAVITY

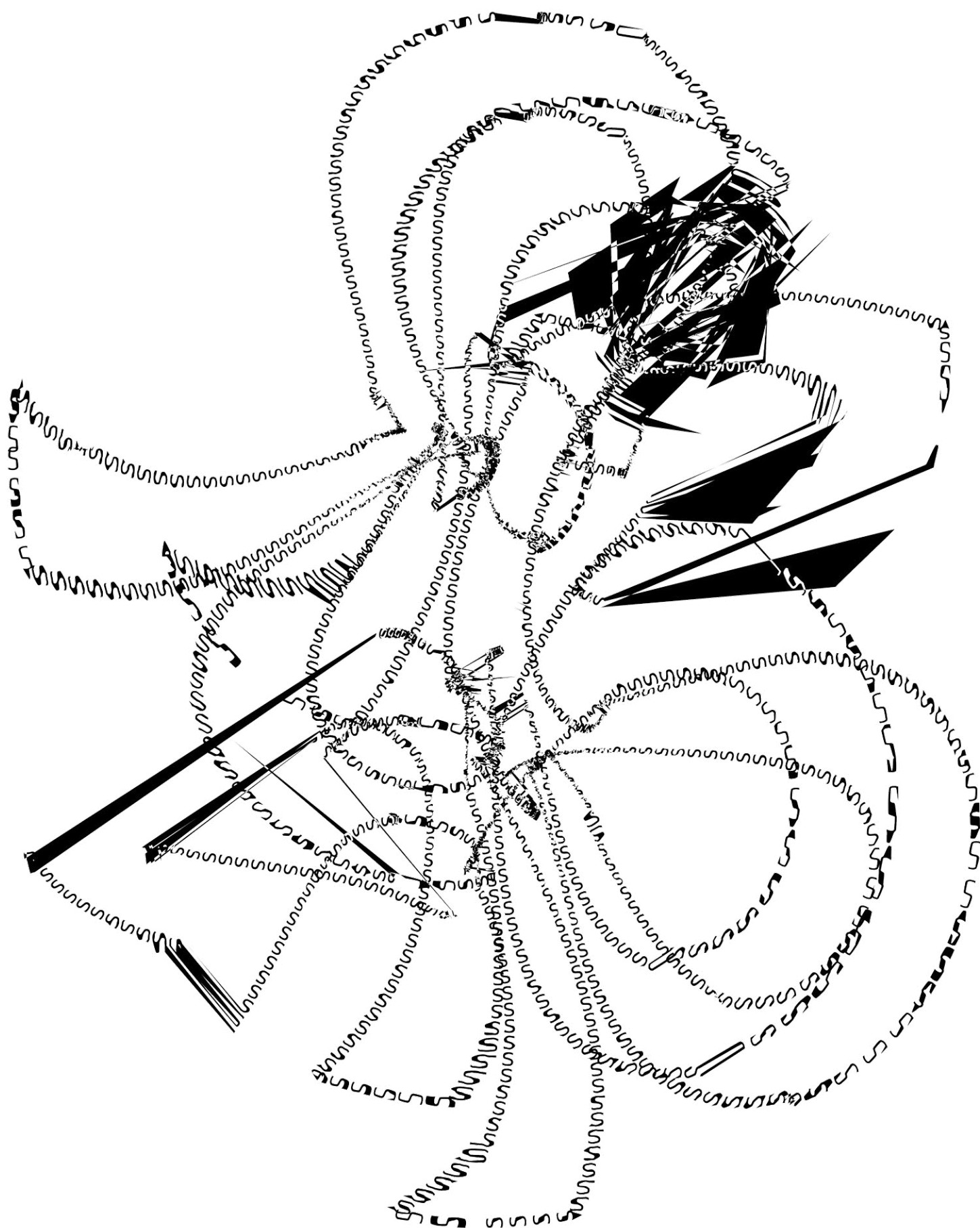
JÖRG PIRINGER

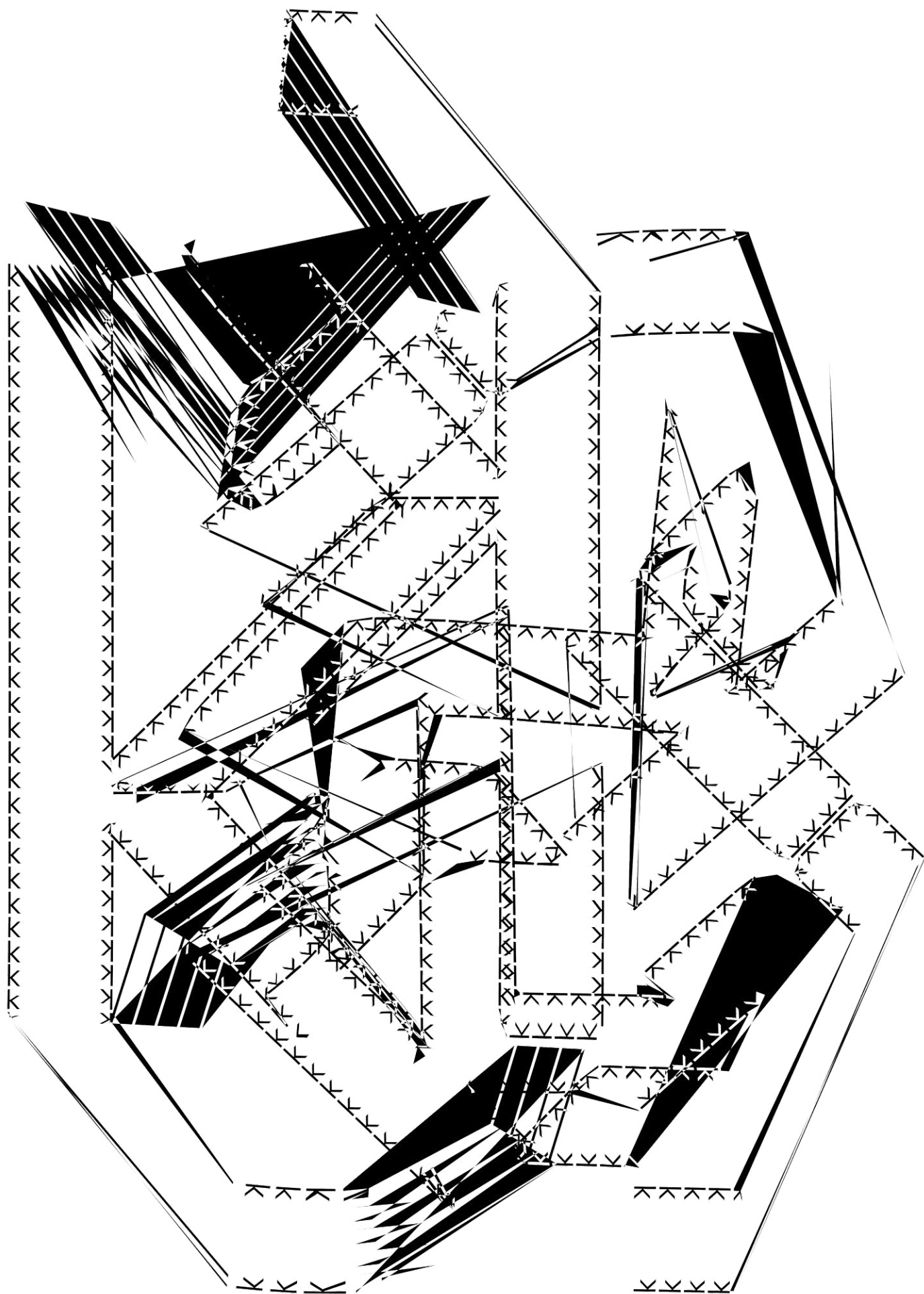
Visual Writing
/ubu editions
2012



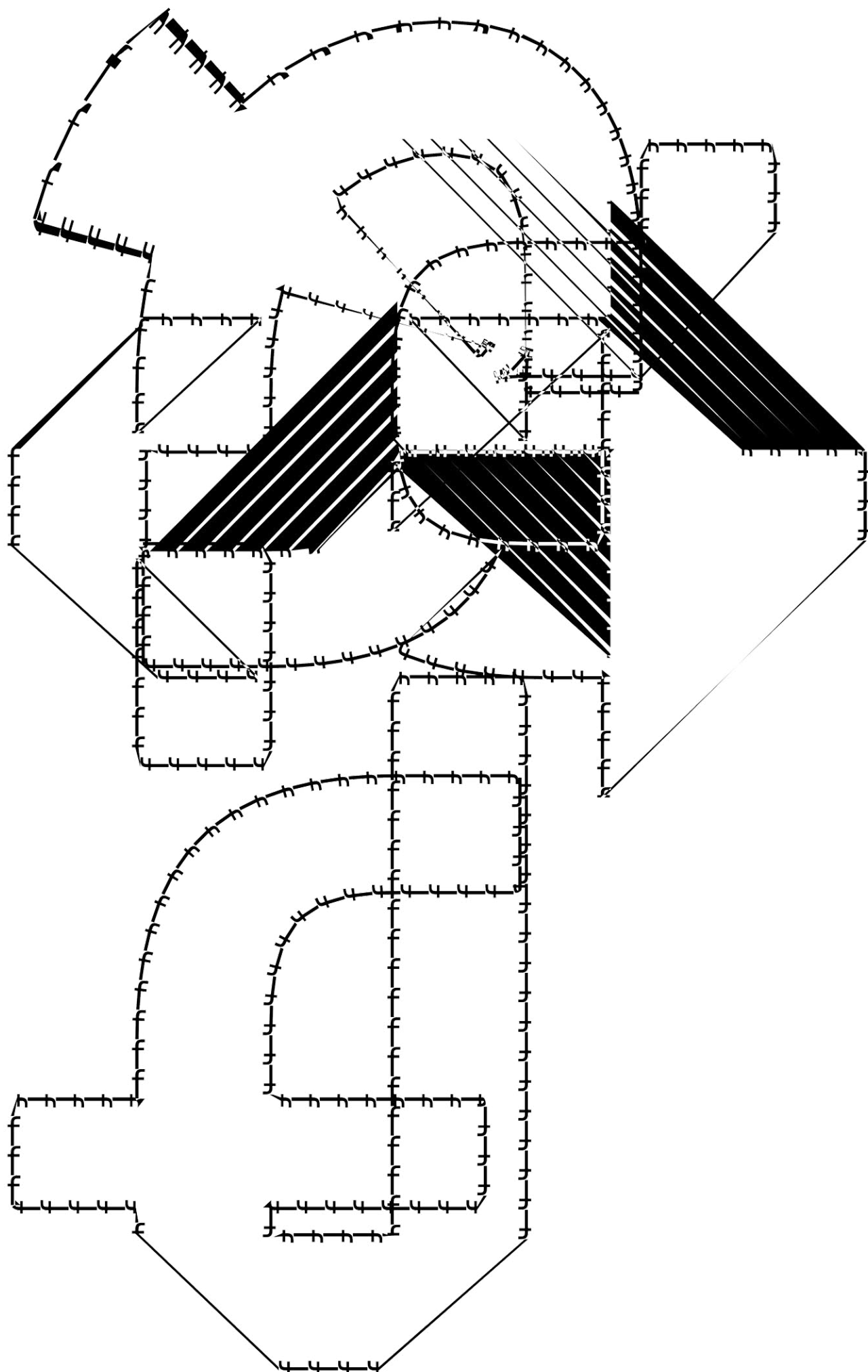


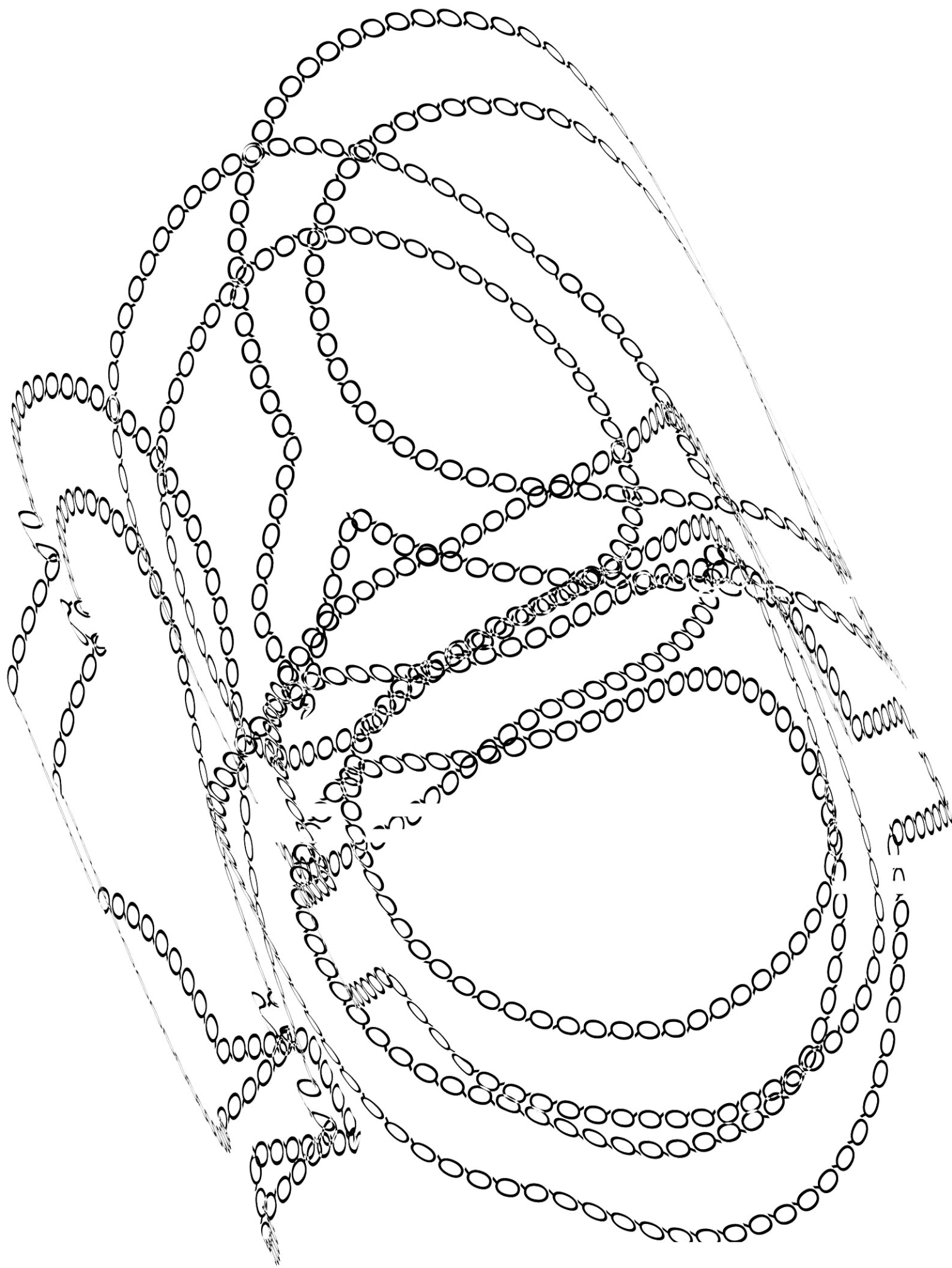


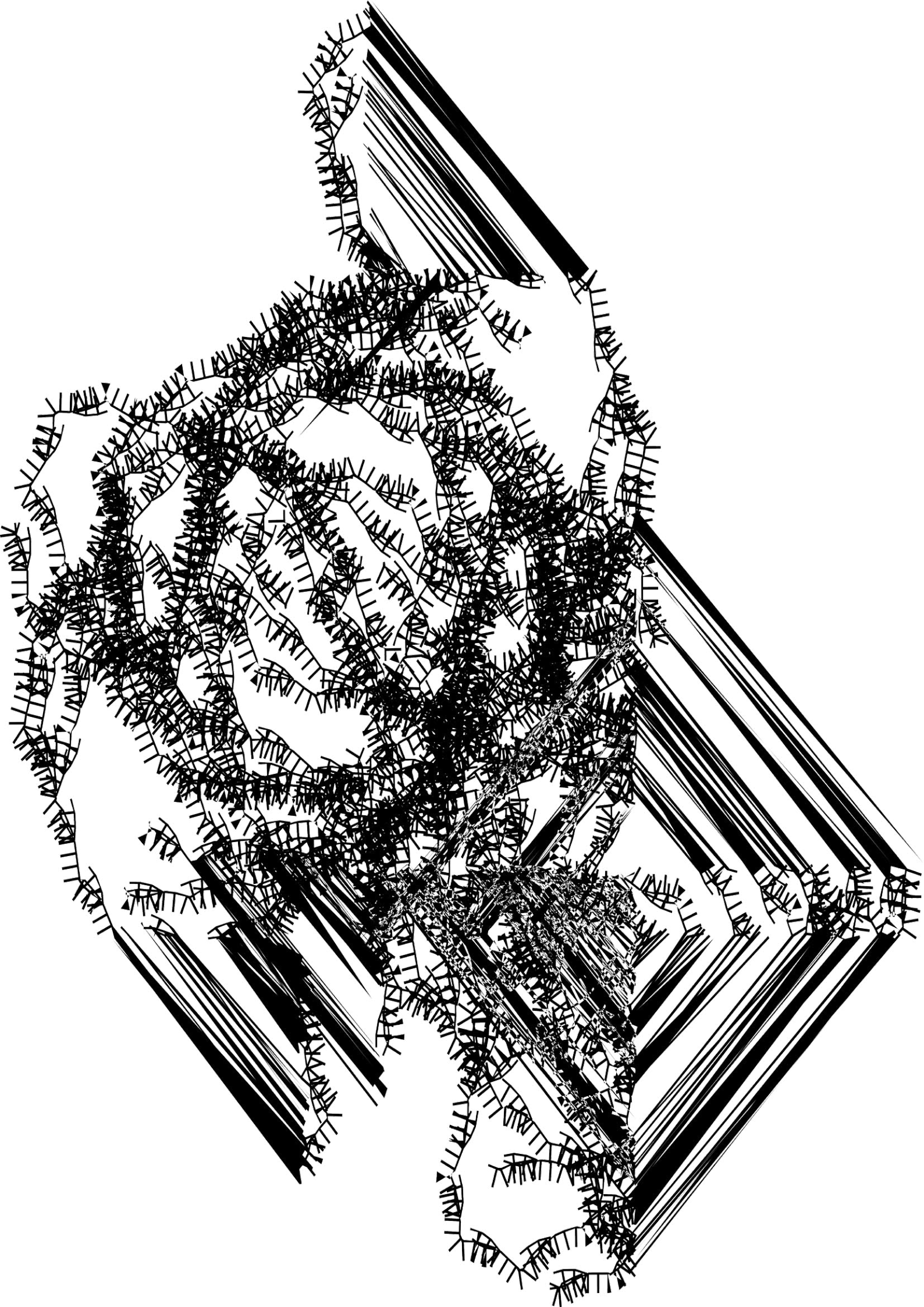


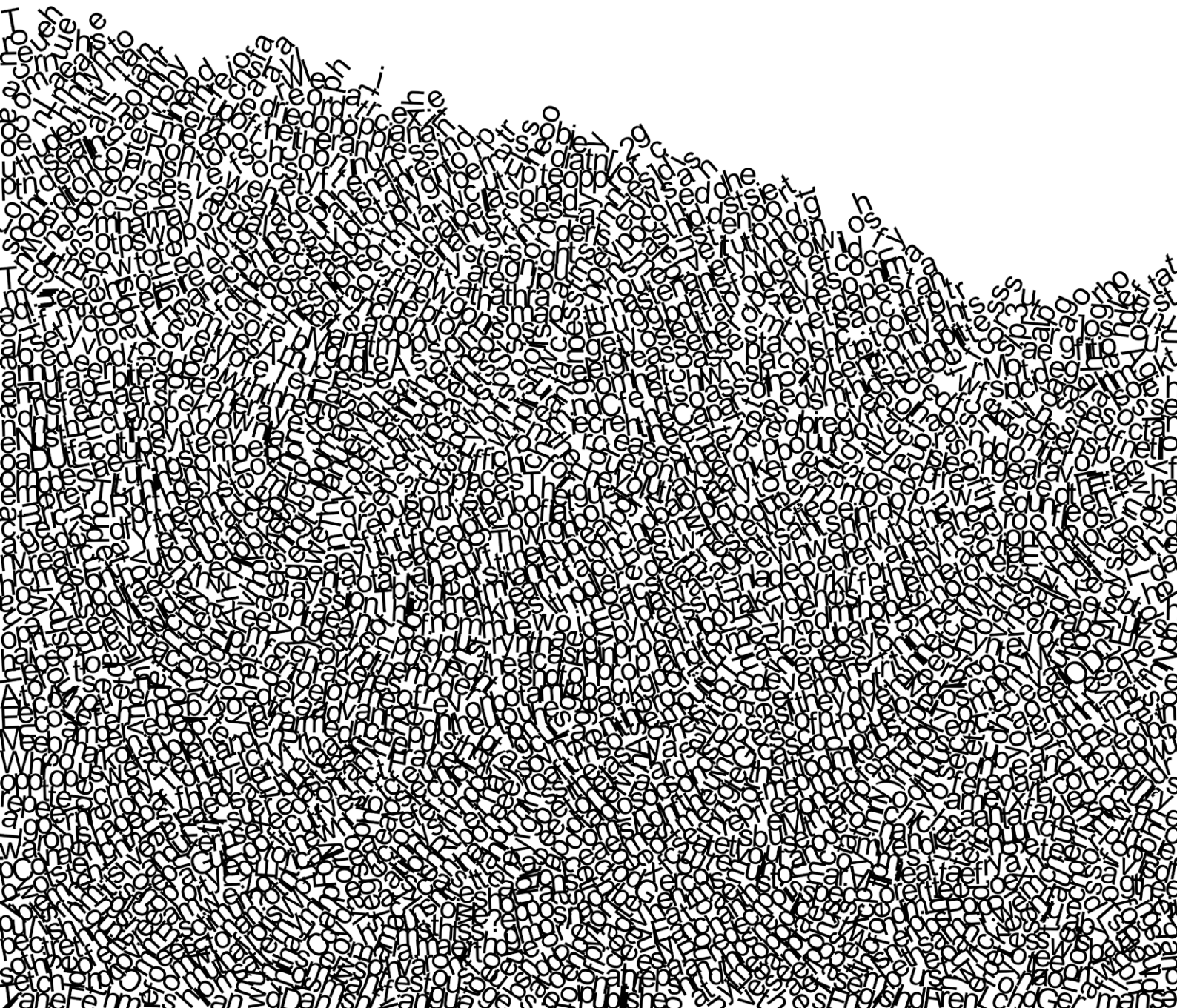


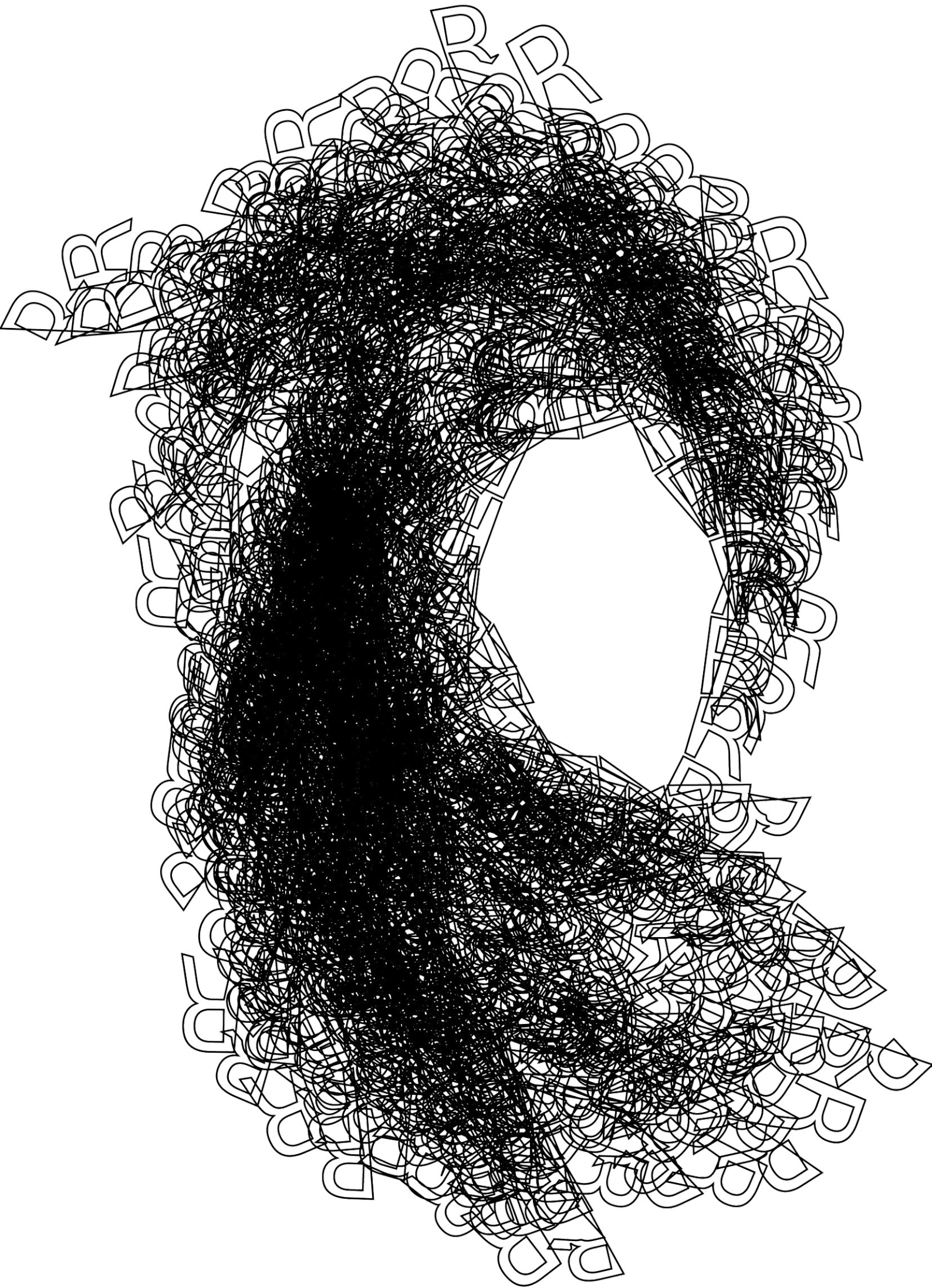












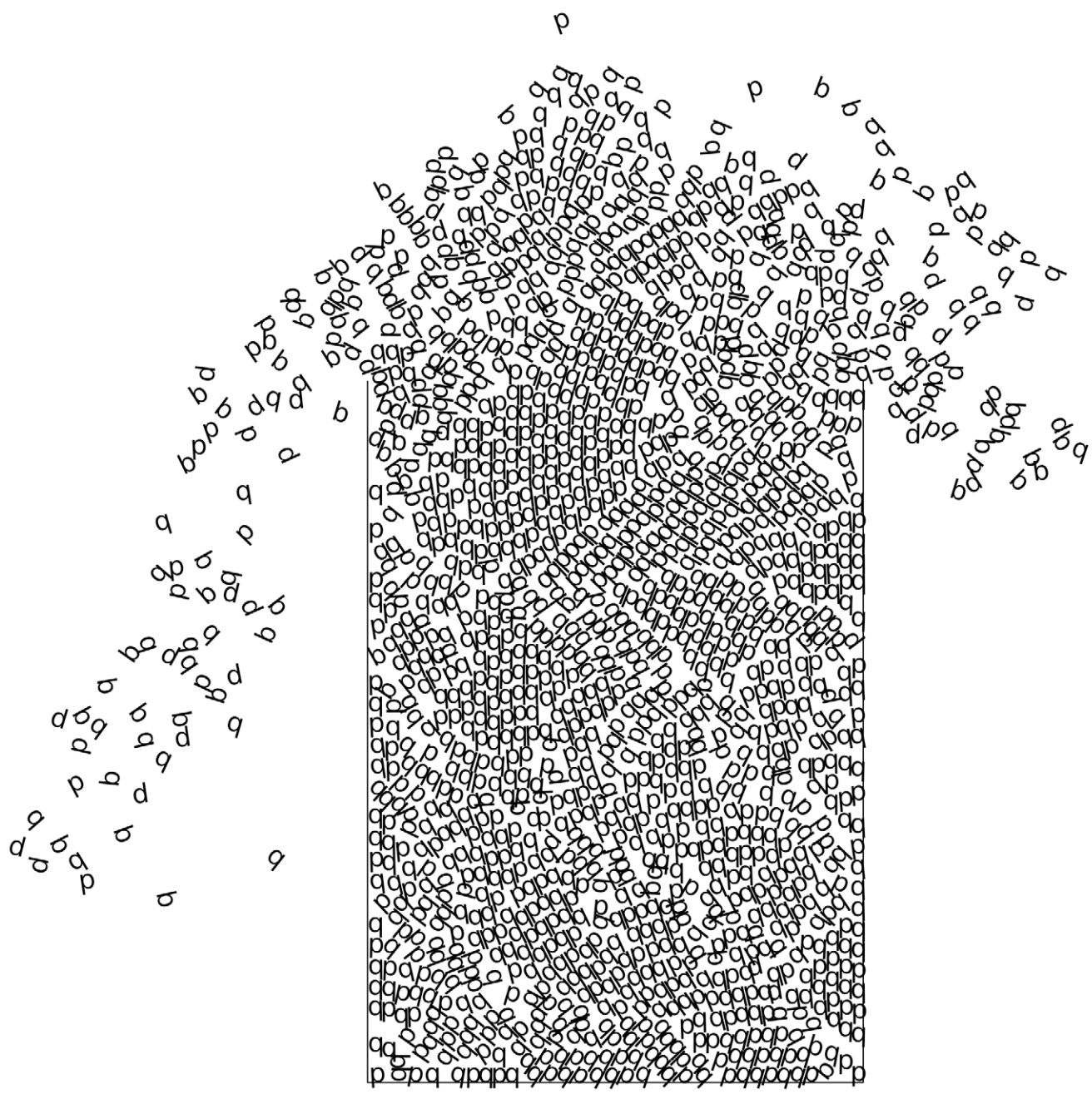


[illegible]

[illegible]

Handwritten text in a cursive script, appearing to be a list or series of entries. The text is written in black ink on a white background. The entries are arranged in a vertical column, with some lines starting with a small circle or dot. The script is fluid and somewhat slanted, typical of cursive handwriting. The text is dense and fills the upper half of the page.

Handwritten text in a cursive script, continuing the list or series of entries from the upper section. The text is written in black ink on a white background. The entries are arranged in a vertical column, with some lines starting with a small circle or dot. The script is fluid and somewhat slanted, typical of cursive handwriting. The text is dense and fills the lower half of the page.



Visual Writing: Documents in Concrete and Visual Poetry

/ubu editions
ubu.com/ubu